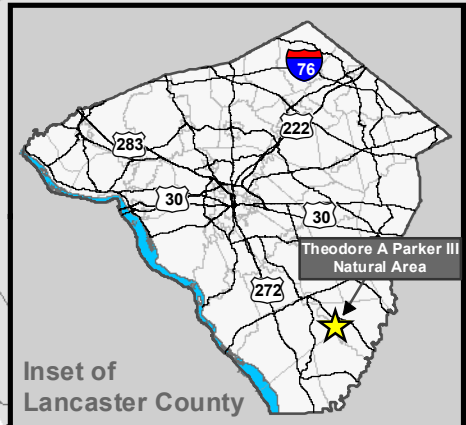
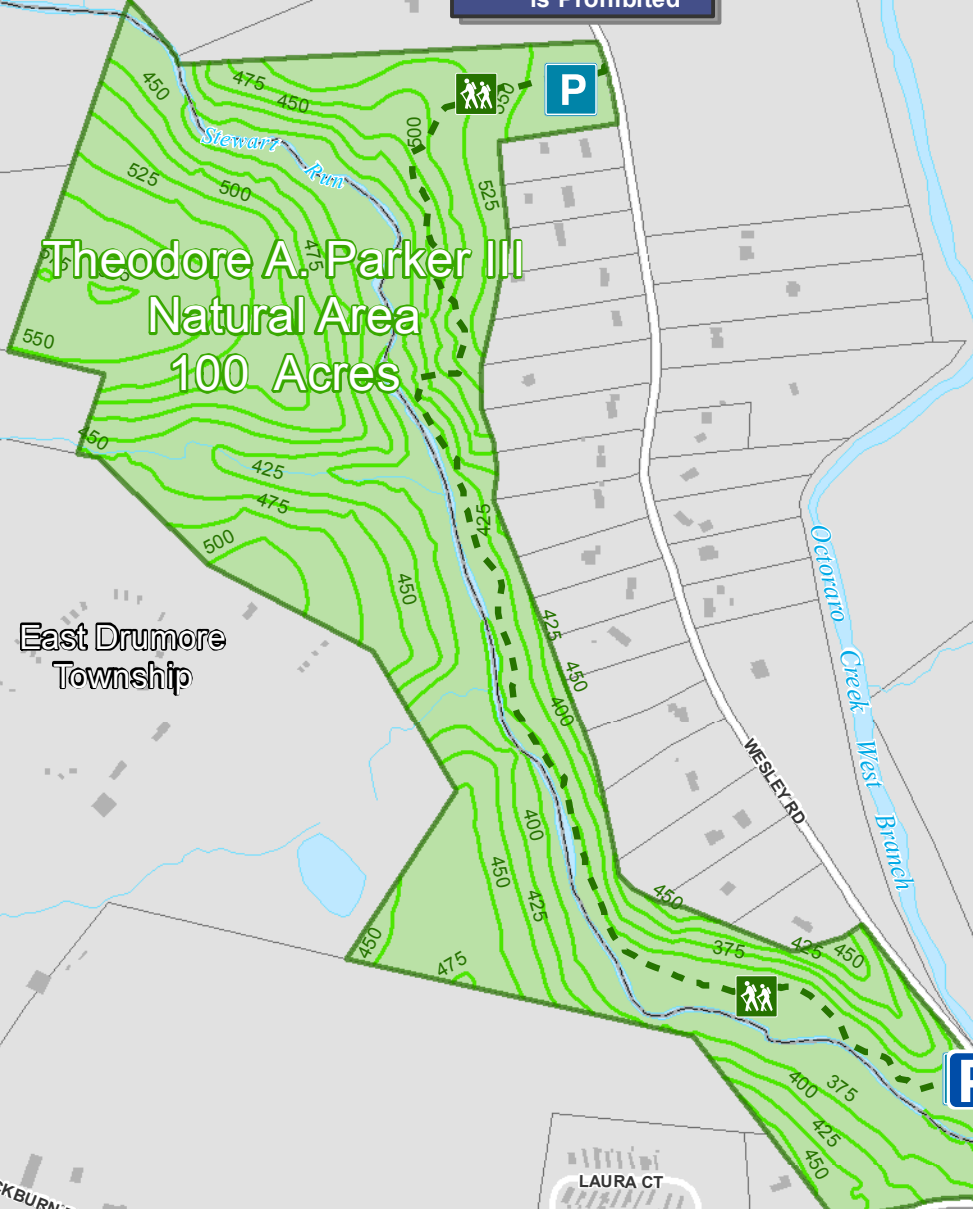


# Theodore A. Parker III Natural Area



Note: Hunting in Park is Prohibited




Colerain Township

East Drumore Township

**Theodore A. Parker III Natural Areas**

This one hundred acre park is located in the southeast portion of Lancaster County. It is named after the late Theodore A. Parker III, who was an internationally known ornithologist from Lancaster County. In this preserved gem, Stewart Run tumbles over rocks and waterfalls to create one of the County's most pristine streams.



Visitors can hike along a trail that parallels this stream and the sheer walls of rock that help to create this isolated valley.

The flora throughout this tract is also impressive. Spring visitors may find trout lilies and violets carpeting the forest floor. In the upper section of the ravine, club mosses, ground pine and other ferns and lichens gives the visitors an idea of the forest that once made up so much of the Keystone State.

Animal life is also abundant, including deer, raccoon, opossum, and both brown and brook trout. Bird enthusiasts will find excellent opportunities in this quiet glen. Fishing is permitted in this park during authorized seasons.

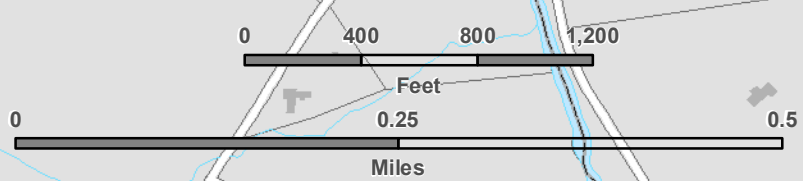
From Quarryville:  
Follow route 222 South for three miles. Go past Solanco High School and turn left onto Blackburn Road. Follow Blackburn Road three miles and turn west onto Wesley Road. Follow Wesley Road across a small bridge and turn left into the parking area.



By: Joseph P. Simora, 06/08/05  
Updated by: SLL, 12/08/09  
LANCASTER COUNTY  
DEPT. OF PARKS AND RECREATION  
1060 ROCKFORD ROAD  
LANCASTER, PA 17602-4624  
TELEPHONE: 717-299-8215



	25ft. Contours		Parking		Secondary Road
	Bridge		Park Boundary		State Road
	Building		Park Trail		Water Feature
	Municipality Boundary		Parcel		
	Stream				



**NOTICE:**  
This drawing was prepared for the use of the Lancaster County Geographic Information Systems (GIS) Department and is intended to be used for reference and illustrative purposes only. This drawing is not a legally recorded plan, survey, official tax map or engineering schematic and it is not intended to be used as such. This drawing is a compilation of records, information and data developed and maintained in various Lancaster County offices; map layers were created from different sources at different scales, and the actual or relative geographic position of any feature is only as accurate as the source information. If you have questions about any of the data shown on this map, direct them to the Lancaster County Geographic Information System (GIS) Department at (717) 391-7550.

**LANDBASE SOURCE:**  
Planimetric and topographic data compiled photogrammetrically to National Map Accuracy Standards for 1" = 200' scale mapping using digital stereoplotters, from aerial photography dated 1988 and 2002, controlled analytically from ground points captured using first-order global positioning system equipment. Topographic contours and elevations were derived using a digital terrain model from feature elevations based on the North American Vertical Datum of 1988. Planimetric coordinates were based on the Pennsylvania State Plane Coordinate System South Zone and North American Datum 1983. Flight dates for base aerial photography were Spring 2002 for Black & White and Spring 2005 for True Color.

**LIMITATION OF LIABILITY:**  
While Lancaster County has no indication or reason to believe that there are any inaccuracies or defects in information incorporated in this work, the County makes NO REPRESENTATIONS OF ANY KIND, INCLUDING, BUT NOT LIMITED TO, THE WARRANTIES OF MERCHANTABILITY OR FITNESS FOR A PARTICULAR USE, NOR ARE ANY SUCH WARRANTIES TO BE IMPLIED OR INFERRED, WITH RESPECT TO THE INFORMATION OR DATA FURNISHED HEREIN.

**COPYRIGHT:**  
Copyright (c) 2009, LANCASTER COUNTY, PENNSYLVANIA. All Rights Reserved.

No part of this data may be reproduced or transmitted in any form or by any means, electronic or mechanical, including photocopying and recording, or by any information storage or retrieval system, except as expressly permitted in writing by the Lancaster County Commissioners. Copies solely for personal, individual use, and for use by a non-profit organization that originally obtained the data from the County, are permitted.